

# Stanway Primary School

## Weekly Bulletin



ISSUE 36

MONDAY, 7TH JULY 2025

### Diary Dates

- Mon**  
**7.7.25**
- Chess Club (3:15pm - 4:15pm)
  - Choir Club (3:15pm - 4:15pm)
  - Drawing & Colouring Club (3:15pm - 4:15pm)
  - French Club (3:15pm - 4:15pm)
- Tues**  
**8.7.25**
- KS2 Create Day
  - Rocksteady (9:00am)
  - Drawing Club (Yrs 3 & 4) (3:15pm - 4:15pm)
  - Year 6 Performance (3:45pm)
  - Annual Reports go home

### Diary Dates

- Wed**  
**9.7.25**
- SCS Summer Sports Club (3:15pm - 4:15pm)
- Thurs**  
**10.7.25**
- Year 5 Swimming (10 of 10) 9am
  - 1 Blake Forest Fun for 5 weeks (9:00am-11:30am)
  - TPP Families meeting at the Church (1:00pm - 3:00pm) (invitation only)
  - Meet the Teacher (3:30pm - 5:00pm)
  - Year 6 Performance (6:00pm)
- Fri**  
**11.7.25**
- Rocksteady (8:30am)
- Sat**  
**12.7.25**
- PTA Summer Fair (11:30am - 2:30pm)

### Looking Ahead

#### Dates for your Diary

- Monday 14th - Wednesday 16th July**  
Year 6 Residential Trip to Bawdsey Manor
- Monday 14th July**  
Bastille Day Lunch
- Tuesday 15th July**  
Rocksteady (Tuesday Group) Concert (9:00am)
- Wednesday 16th July**  
Diabetic Screening (9:00am)
- Friday 18th July**  
Summer Music Concert (9:00am)  
Rocksteady (Friday Group) and Stanway Primary School Choir
- Monday 21st July**  
Talent Show
- Tuesday 22nd July**  
Year 6 Leavers Assembly (9:15am)  
Break up for Summer Holiday

# Messages



Follow us on [Facebook](#)

## Letters Home

Proposed Yr6 Residential Trip 2026 p- Year 5 Parents via Email 3.7.25

Wake Up Wednesday Guide - All Parents via Arbor In App 3.7.25

PTA Summer Fayre Cake Donations - All Parents via Email 2.7.25

PTA Summer Fayre - All Parents via Email 1.7.25

Diabetic Screening - 16th July 2025 - All Parents via Email 1.7.25

## Attendance

Well done to R Rosen who had the best attendance last week at 96.5%!

The winners of the Attendance Bears are R Rosen, 3 Morpurgo and 6 Tolkien.

<u>Class</u>	<u>Attendance % Present</u>
R Hendra	88.8%
R Rosen	96.5%
1 Blake	86.8%
1 Donaldson	94.1%
2 Bond	91.6%
2 Dahl	92.3%
3 Morpurgo	93.3%
3 Wilson	90.7%
4 Jackson	87.8%
4 Zephaniah	92.1%
5 Rauf	90.6%
5 Shakespeare	90.0%
6 Rowling	92.7%
6 Tolkien	93.2%

Stanway Primary School PTA Presents

WELCOME TO THE

# CARNIVAL

Saturday 12th July 2025

11.30am - 2.30pm

**Open to everyone, so please bring family and friends along to join in the fun!**

Pocket Money & Sweets Stall  
Face Painting & Glitter Tattoos  
Raffle  
Entertainment Area

Inflatables Area  
Carnival Games  
BBQ  
Sand Art

Family Picnic Area  
Cakes & Refreshments  
Tombola  
Ice Cream Van

## Science Dude - Crazy Science Show, 11am - 11.45am

Kick start the fun by joining Science Dude Kev for an exciting Science vs Magic show!  
Tickets in advance via <https://www.ticketsource.co.uk/stanway-primary-school-pta>

£5 per person, £18 family ticket (4 tickets). Children require a paying adult to join them.

## Chris Mayne - The Ultimate Entertainer

We are thrilled to welcome back Chris Mayne who will be entertaining the crowds with his amazing bubble art and magic tricks plus a spot of stilt walking; be sure to tag us in your photos!!

If you are interested in holding a local business stall please contact the PTA on the email below for further information.

Tables are limited, on a first come first serve basis.

If you have any queries or would like to volunteer to help on the day please contact the PTA on [pta@stanway-pri.essex.sch.uk](mailto:pta@stanway-pri.essex.sch.uk)



Sponsored by:



The Renovation Centre.

The  
**ELSA**  
Study



UNIVERSITY OF  
BIRMINGHAM



## Screening children for type 1 diabetes



**Would you like to get your child  
screened for type 1 diabetes in the  
ELSA diabetes research study?**

**We are screening children, aged 3-13 years,  
at a clinic near you:**

**Date:** Wednesday 16<sup>th</sup> July 2025

**Time:** 09:30

**Location:** Stanway Primary School

**Register here:** [www.elsadiabetes.nhs.uk](http://www.elsadiabetes.nhs.uk)

**Contact us:** [Research.eoe@nihr.ac.uk](mailto:Research.eoe@nihr.ac.uk)

**Scan for info**





# Story Garden

Adventures in Nature and the Great Outdoors



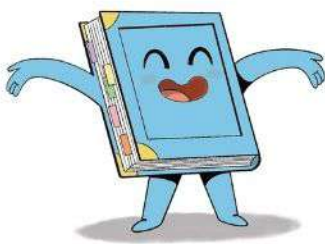
**Arriving in your local library this summer!**

**The challenge where children across Essex explore the magical connection between storytelling and nature! Read six books or do a range of other challenges to receive a certificate and medal!**

**Saturday 19 July to  
Saturday 6 September 2025**

**Find out more about how to take part in this free activity:**

**[libraries.essex.gov.uk/news/summer-reading-challenge](https://libraries.essex.gov.uk/news/summer-reading-challenge)**



# FREE PACKED LUNCHES

STANWAY EVANGELICAL  
CHURCH  
CHAPEL ROAD  
CO3 0PU

AVAILABLE  
WEEKDAYS IN  
THE LOBBY  
PLEASE HELP  
YOURSELF



10.30am-12.30pm

**MON 28<sup>TH</sup> JULY - FRI 29<sup>TH</sup> AUG**  
**EXCL. BANK HOLIDAY MON 25<sup>TH</sup>**



Dear Parents

This year is Grove Preschool's 50<sup>th</sup> anniversary.

We first opened our doors in 1975 and have been successfully serving the community of Stanway for 50 years.

To acknowledge this amazing achievement, we would like to mark the occasion by inviting families past and present to preschool for some refreshments, to look at photos, chat about the old days and sign a commemorative book.

We look forward to seeing you all again on **Friday 18<sup>th</sup> July from 3.15pm**



50<sup>th</sup>  
Anniversary

